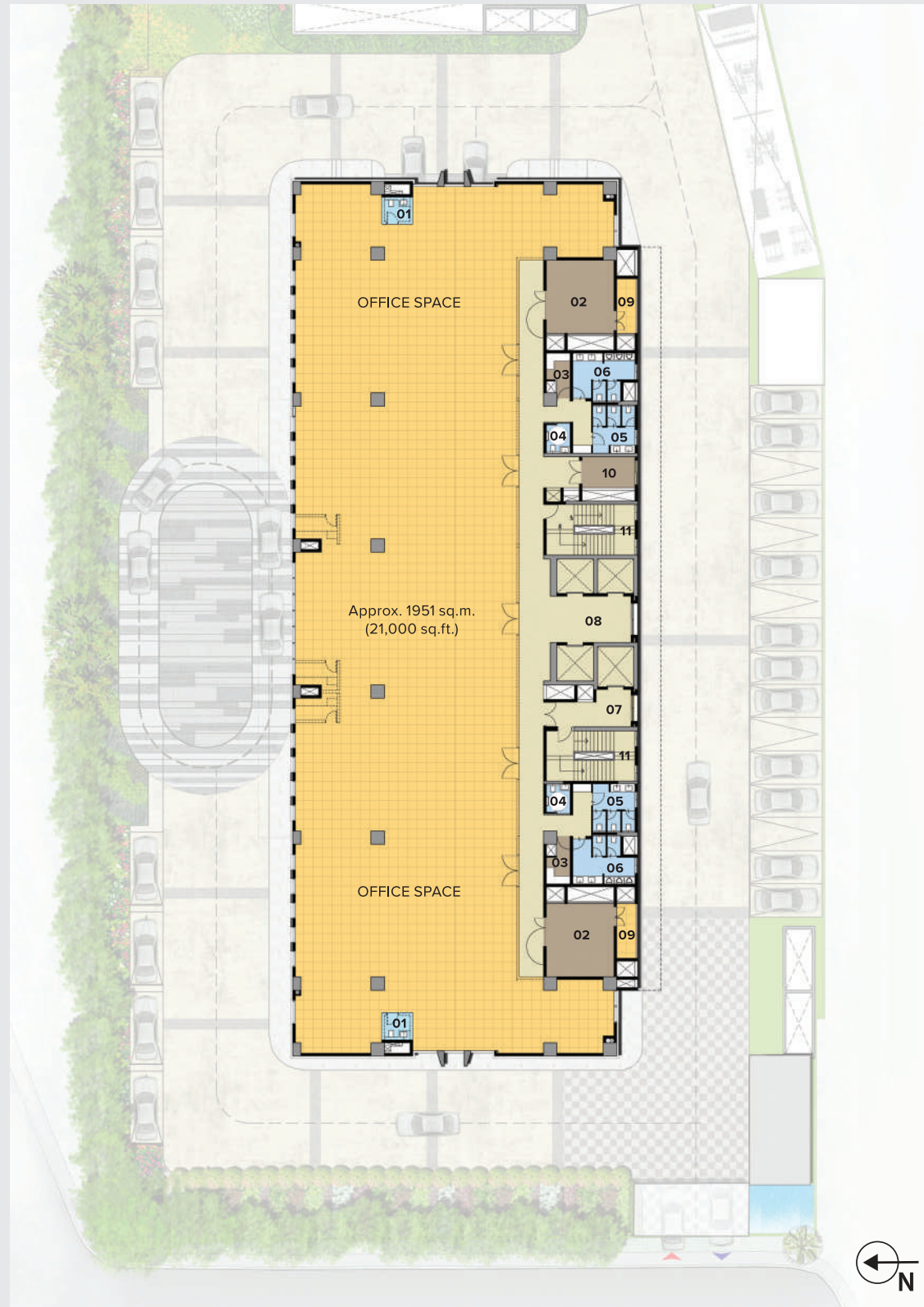


## SINGLE TENANCY FLOOR PLAN



## KEY DESIGN FEATURES

- 100% power backup
- Centralised air-conditioning
- Zero discharge design
- Rainwater harvesting
- STP and WTP
- Ample car parking
- Proposed cafeteria
- Aiming for Gold Rating under IGBC Core and Shell (Tenant Occupied) scheme
- Double-height reception lobby

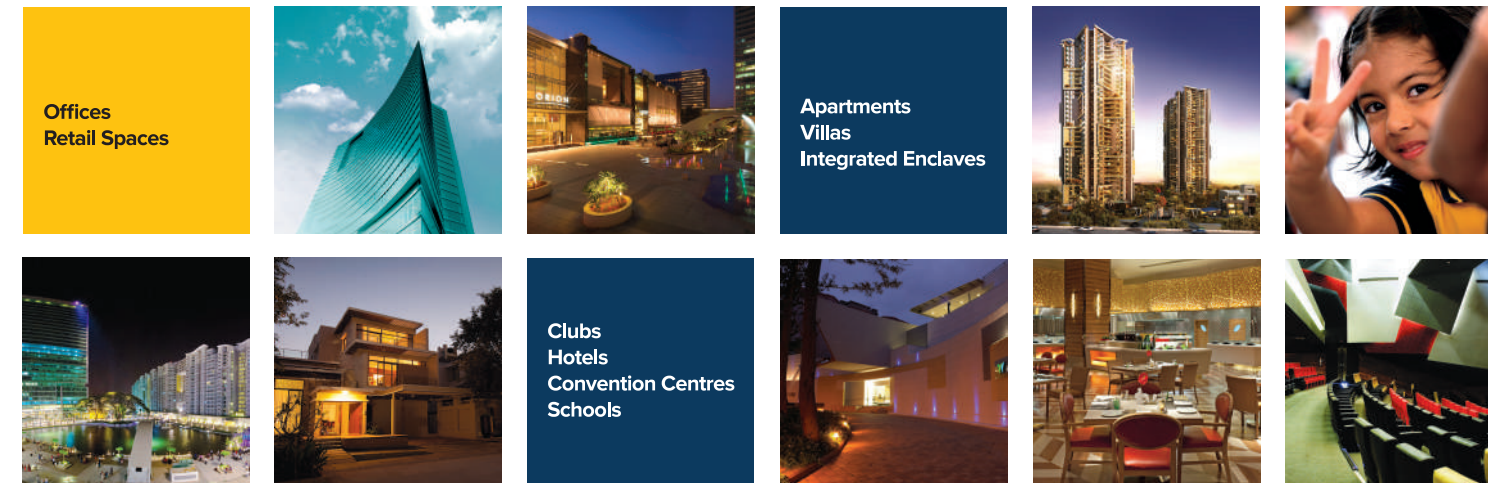
\*PROPOSED.

The information herein, i.e. specifications, signs, dimensions, illustrations etc. are subject to change without notification, as may be required by the relevant authorities or the Developer's Architect and cannot form part of an offer or contract. Whilst every care is being taken in providing this information, the owners, developers and managers cannot be held liable for variations. All illustrations are artist's impressions only, and do not form part of the standard offering. The plans & specifications are subject to variations, modifications and substitutions as may be recommended by the company's Architect and / or relevant approving authorities. 1 sq.m. = 10.764 sq.ft. E&OE

## MULTIPLE DOMAINS, SINGLE-MINDED COMMITMENT

Brigade is one of India's leading developers with over 35 years of expertise in building positive experiences for all stakeholders. The company has transformed the city skylines in various cities of India with developments across residential, offices, retail, hospitality and education sectors.

The company's residential portfolio includes penthouses, villas, luxury apartments, premium residences, value homes, retirement homes and award-winning fully integrated lifestyle enclaves across a wide budget range. Brigade is among the few developers who have built a reputation of developing well-planned Grade A commercial properties.



## AWARDS AND ACCOLADES

**GREAT PLACE TO WORK**

Brigade has been recognised for being amongst India's Best Workplaces in Real Estate for 11 years in a row, at the 'Great Place To Work' 2021

## BRIGADE TECH GARDENS

Was awarded the 'Commercial Project of the Year' (South) at the Estate Awards 2020

CIDC Vishwakarma Awards 2021

Was awarded the 'Commercial Project of the Year' at the 12th Realty Plus Excellence Awards, South

## BRIGADE INTERNATIONAL FINANCIAL CENTRE

Brigade International Financial Centre (BIFC), Gujarat was awarded the 'Commercial Property of the Year' (West) at the Realty Plus Excellence Awards 2019

## BRIGADE OPUS

Brigade Opus was awarded the 'Best Commercial Complex' award at the CREDAI Awards for Real Estate (CARE) 2019

## BRIGADE GROUP

Was awarded the 'Developer of the Year' – Residential at the 12th Realty Plus Excellence Awards, South

Brigade was awarded 'India's Top Builders for the Year 2020' at the Construction World Architect & Builders (CWAB) Awards

Since Brigade's inception in 1986, it has completed nearly 200 buildings amounting to over

70 million Sq.ft. across residential, offices, retail and hospitality sectors. Over the years, the company has taken pride in not just being a developer of quality spaces, but also an employer of highest standards. In addition to numerous awards for its projects, Brigade has been consistently recognised, for being amongst the best employers in the real estate and construction sector in the country, for the past 11 years by the Great Place To Work Institute.



WHERE BUSINESS  
SUCCESS REIGNS  
**TRIUMPHANT**



# BRIGADE TRIUMPH

———— Hebbal ————

RERA Registration No. PRM/KA/RERA/1251/309/PR/180728/001964  
Available at [www.rera.karnataka.gov.in](http://www.rera.karnataka.gov.in)

To **UPGRADE TO BRIGADE**, reach us on: **1800 102 0115** | email: **commercial@brigadegroup.com**

**Corporate Office:** 29th & 30th Floor, World Trade Center, Brigade Gateway Campus, 26/1, Dr. Rajkumar Road, Malleswaram-Rajajinagar, Bangalore 560 055

RERA Registration No. PRM/KA/RERA/1251/309/PR/180728/001964. Available at [www.rera.karnataka.gov.in](http://www.rera.karnataka.gov.in)

TRI-VER2-JUL21

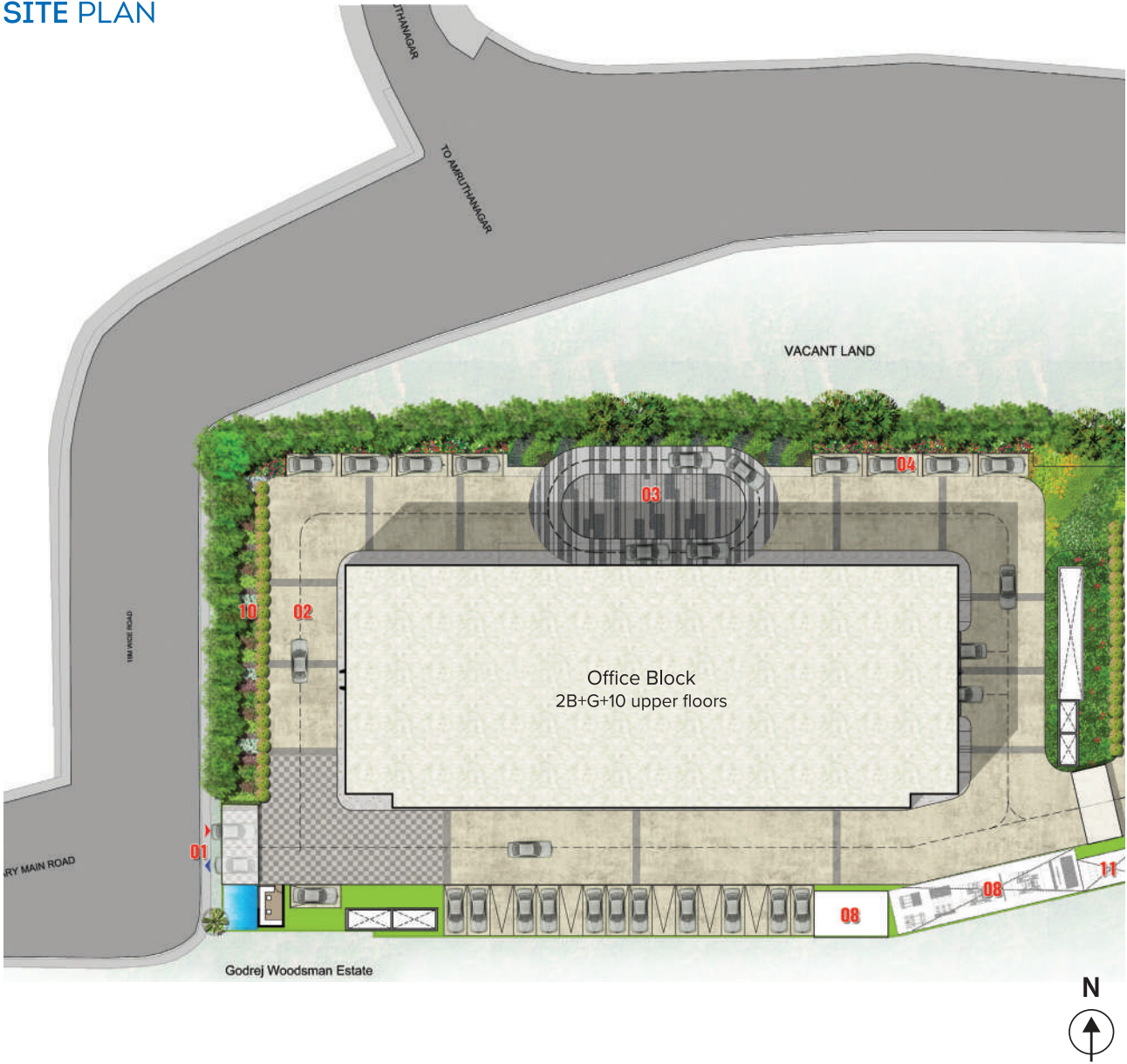




WHERE YOU DO BUSINESS  
IS WHERE IMPRESSIONS ARE CREATED.

It's only applauds that you will hear when the world notices you at the top of your game. Yes, being triumphant goes beyond winning, it is an emotion, an attitude. Set within a 2 acre expanse and towering over 10 floors, Brigade Triumph offers you an advantage like no other. A business lobby that boasts of its double height ensures a grand entrance to an even impressive ecosystem that comes alive with abundant daylight streaming through while everyone is abuzz at work.

SITE PLAN



Office floor plate area - approx. 1,951 sq.m. (21,000 sq.ft.)

Office block - 2 Basement + Ground + 10 upper floors

\*PROPOSED.

The information herein, i.e. specifications, designs, dimensions, illustrations etc. are subject to change without notification, as may be required by the relevant authorities or the Developer's Architect and cannot form part of an offer or contract. Whilst every care is being taken in providing this information, the owners, developers and managers cannot be held liable for variations. All illustrations are artist's impressions only, and do not form part of the standard offering. The plans & specifications are subject to variations, modifications and substitutions as may be recommended by the company's Architect and / or relevant approving authorities. 1 Sq.m. = 10.764 Sq.ft. E&OE

THE PEOPLE YOU TOUCH BASE WITH  
CAN ELEVATE YOU TO NEWER HEIGHTS.

At Brigade Triumph, you will experience synergic workspaces and break out zones that encourage collaboration and innovation while advancing productivity among colleagues. The sustainable workplace features that surround you, help reduce operational costs through energy cost savings, and provides the flexibility to adapt to change. With aesthetically planned green spaces that add to the exclusivity of the ecosystem, you'll certainly walk the talk in a very tranquil setting.



WHERE CONVENIENCE AND FLEXIBILITY GO HAND IN HAND.

Keeping the location quotient as key, Brigade Triumph has all the advantages to become the new nucleus of business activity. Well-connected to all prominent points in the city, it is easily accessible from the airport, the city centre and other arterial ring roads. Developed, near the charming Hebbal Lake, it lies in close proximity to two of our coveted business addresses - Brigade Magnum & Brigade Opus, thereby offering the flexibility of business growth.



CONNECTIVITY



HOTELS



MALLS

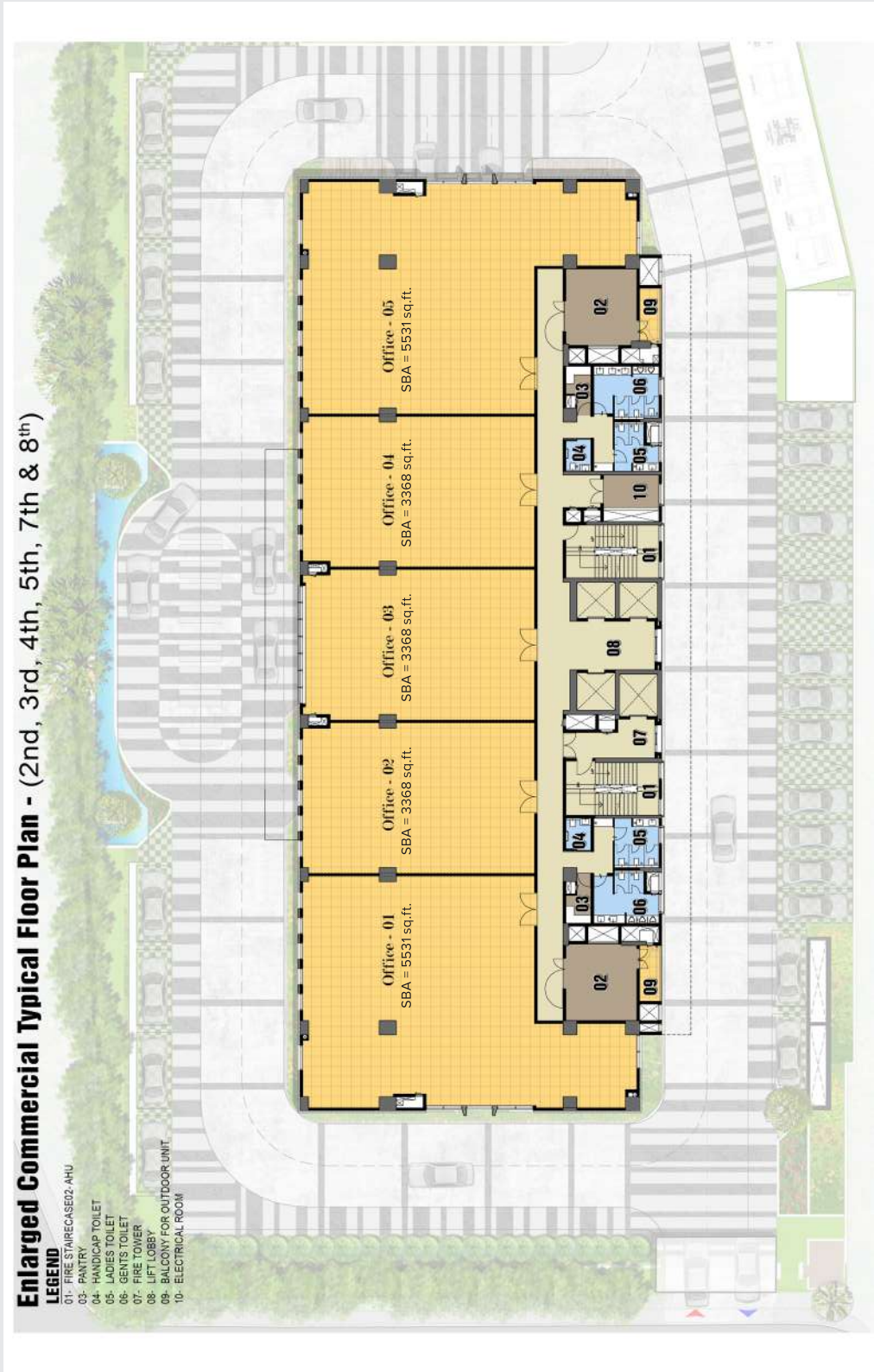


HOSPITALS





# MULTI TENANCY FLOOR PLAN



\*PROPOSED.

The information herein, i.e. specifications, designs, dimensions, illustrations etc. are subject to change without notification, as may be required by the relevant authorities or the Developer's Architect and cannot form part of an offer or contract. Whilst every care is being taken in providing this information, the owners, developers and managers cannot be held liable for variations. All illustrations are artist's impressions only, and do not form part of the standard offering. The plans & specifications are subject to variations, modifications and substitutions as may be recommended by the company's Architect and / or relevant approving authorities. 1 Sq.m. = 10.764 Sq.ft. E&OE



LOBBY

